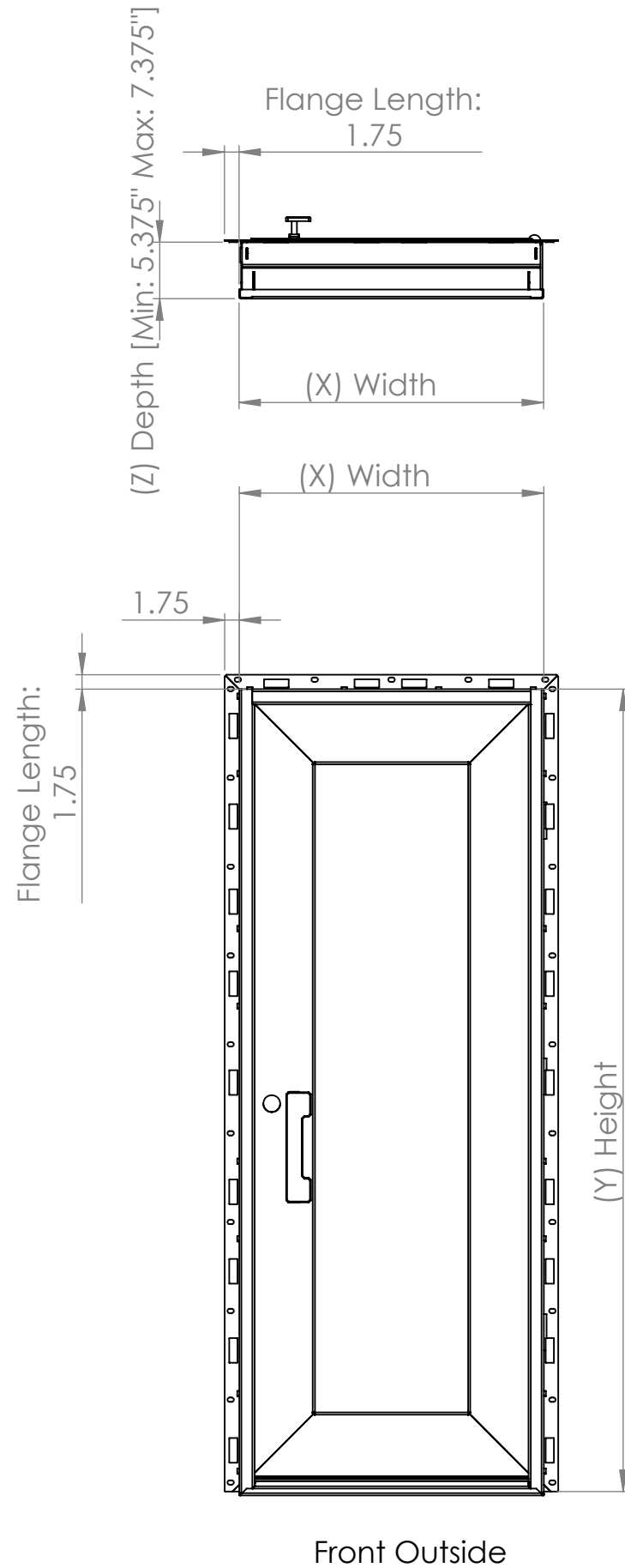


Single & Double Door Measurement Form: X (Width) & Y (Height)



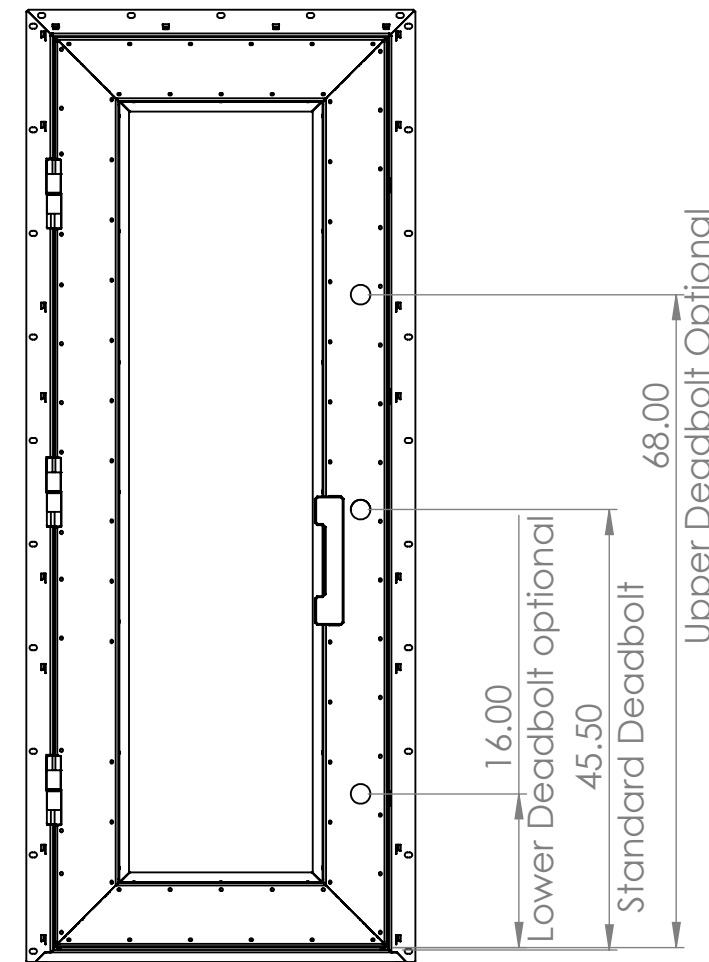
Please Provide your "slide in" measurements:

X - Width:

Y - Height:

(Notice: when tilting door into place, from slab to top of door frame opening, please allow 1/2 inch clearance.)

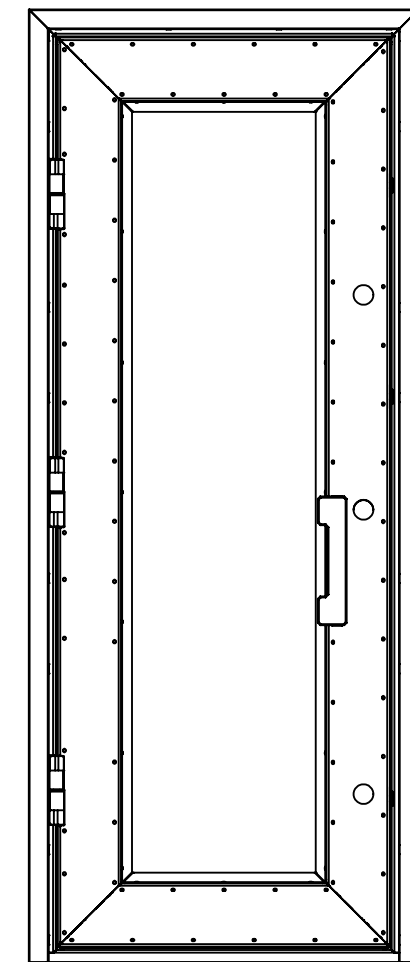
Note: These measurements will be how your door will be built to a 1/32 inch (.03125") tolerance.



Front Inside

Before Interior Molding

Door mounts from the inside and has 1.75 inch mounting flange on both sides and top. We suggest you install using 1/2 inch dia x 2.5 inch long lag bolts into studs and header.



Front Inside

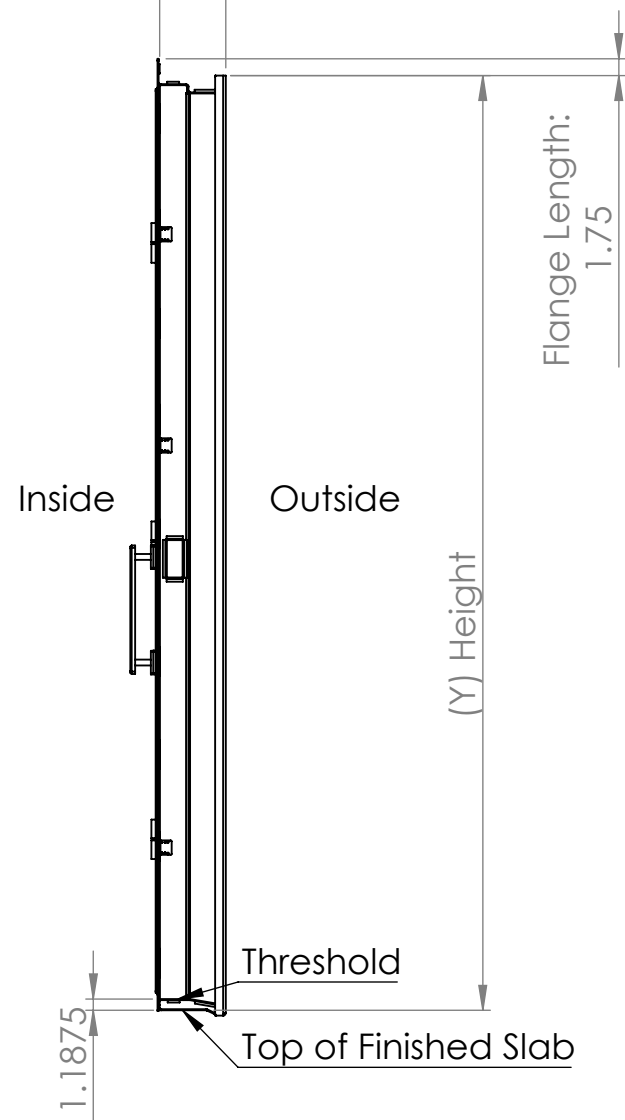
With Interior Molding

Interior molding is provided with each door. Powdercoated to match and measures from the top of the door frame to the top of the slab. The molding has a inter locking design and installs without hardware.

*Our standard deadbolt hole is 2.05" in diameter and 45.5" on center from the bottom of door we offer extra deadbolt placement for additional security we can add upto 2 additional deadbolt placements if you choose. Hole placement is as follows standard 45.5" from bottom of door, lower 16" from bottom of door, upper 68" from bottom of door. Backset options are 2.75" or 2.375" we suggest 2.75" on all our door unless nessary. Your deadbold choice must fit a 3" thick door and fit your choosen backset

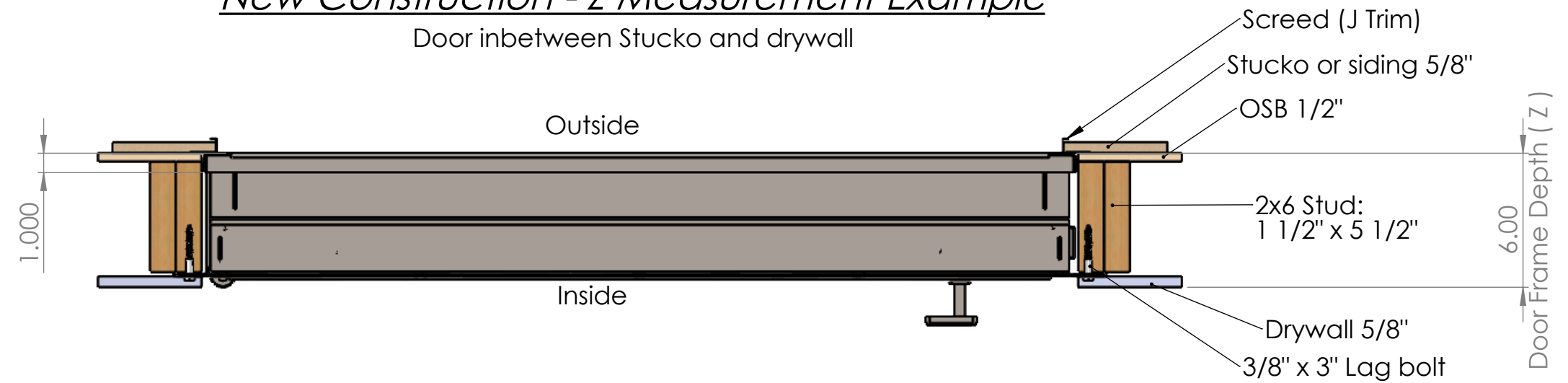
Single & Double Door Measurement Form: Z (Depth)

(Z) Depth [Min: 5.375" Max: 7.375"]



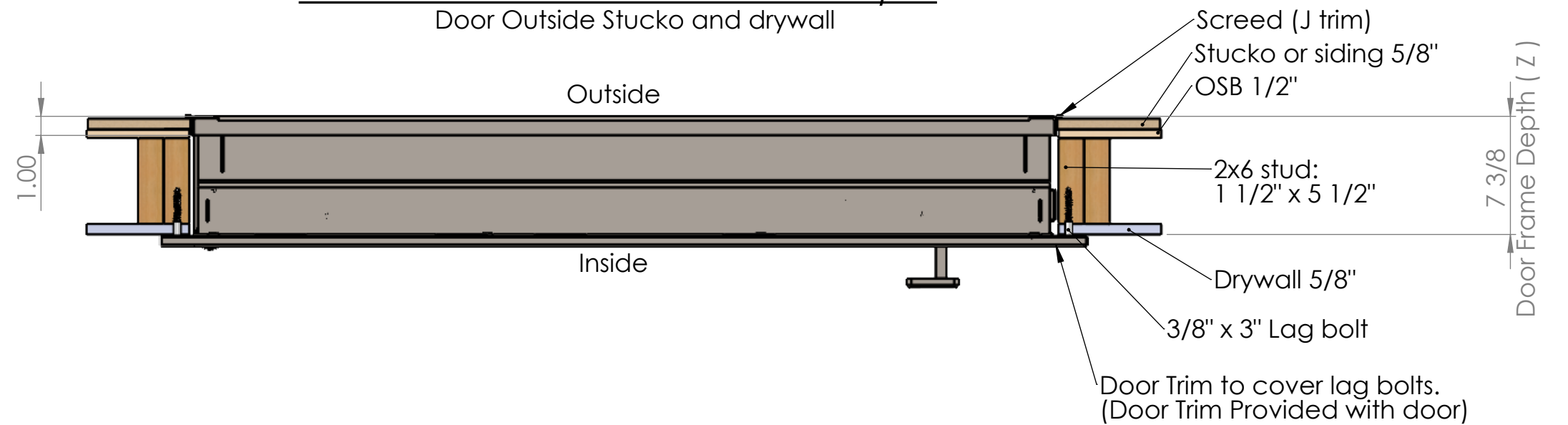
New Construction - Z Measurement Example

Door inbetween Stucko and drywall



Retro-Fit - Z Measurement Example

Door Outside Stucko and drywall



Please Provide your "slide in" measurements:

Z - Depth:

(Notice: Minimum: 5.375" ; Maximum: 7.375")

Note: These measurements will be how your door will be built to a 1/32 inch (.03125") tolerance.